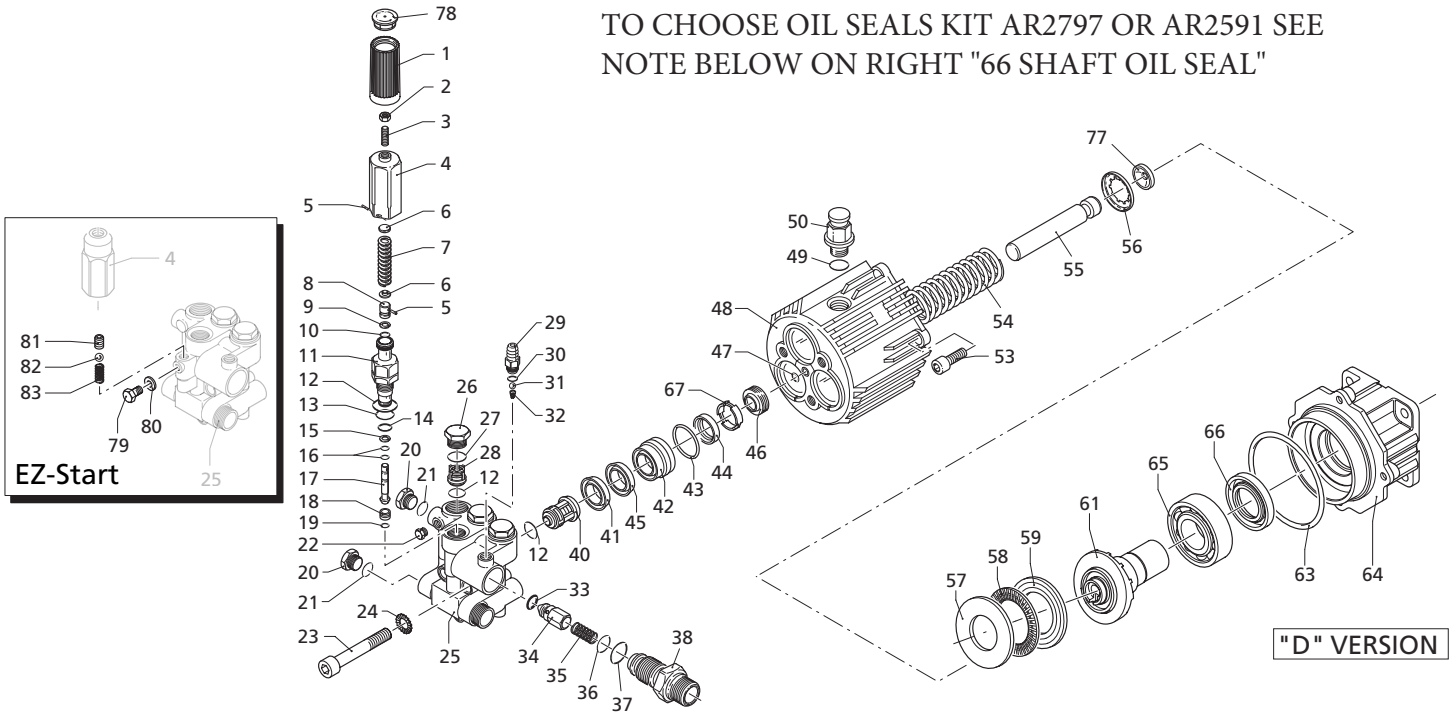
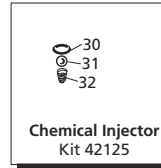
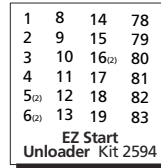
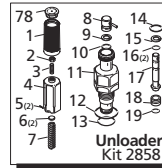
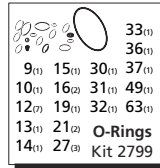
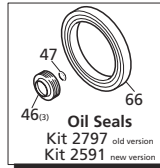
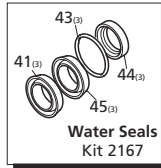
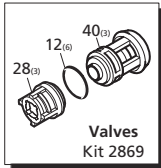


TO CHOOSE OIL SEALS KIT AR2797 OR AR2591 SEE NOTE BELOW ON RIGHT "66 SHAFT OIL SEAL"



Repair Kits



Pos	Code	Description	Qty	Pos	Code	Description	Qty	Pos	Code	Description	Qty
1	1981780	Knob	1	36	394280	O-Ring ø12.42x1.78	1	83	1981801	Spring - EZ Start	1
2	1980300	Nut	1	37	1200690	O-Ring ø15.6x1.78	1		AR64545	Oil	1
3	1980470	Adjusting screw	1	38	1270141	Injector adapter	1			OIL CAPACITY - 4.5 OZ	
4	1980390	Handle insert	1	40	1989050	Inlet valve	3				
4	1980540	Handle insert - EZ Start	1	41	1342761	Gasket	3				
5	1080070	Pin	2	42	1981570	Piston guide	3				
6	1980220	Plate spring	2	43	770260	O-Ring ø23.52x1.78	3				
7	1271070	Spring	1	44	1260440	Gasket	3				
8	1080041	Upper piston	1	45	1981580	Ring	3				
9	1080401	Back-up ring	1	46	1980410	Oil seal	3				
10	1080250	O-Ring ø7.66x1.78	1	47	770090	O-Ring ø5.28x1.78	1				
11	1980210	Piston guide	1	48	1480010	Pump housing	1				
12	880830	O-Ring ø15.54x2.62	7	48	1981260	Pump housing anodized	1				
13	740290	O-Ring ø14x1.78	1	49	740290	O-Ring ø14x1.78	1				
14	800560	O-Ring ø8.73x1.78	1	50	1980380	Oil cap	1				
15	1271170	Back-up ring	1	53	180030	Bolt M8x20	(228 in/lbs) 4				
16	1080190	O-Ring ø2.9x1.78	2	54	1981140	Spring	3				
17	1271160	Lower piston	1	55	1981120	Piston	3				
18	1980200	Valve seat	1	56	1980150	Spring retainer	3				
19	1470210	O-Ring ø9x1	1	57	1983100	Rail	1				
20	880581	Plug 1/4" G	2	58	1980250	Bearing	1				
21	820510	O-Ring ø10.82x1.78	2	59	1980240	Thrust washer	1				
22	620301	Plug 1/8" G	1	61	1982710	Hollow shaft	● 1				
23	1980310	Head bolt M10x65	(443 in/lbs) 3	61	1982810	Hollow shaft	■ 1				
24	650530	Lockwasher	3	61	1982840	Hollow shaft	▲ 1				
25	1982450	Pump head brass	1	63	1980340	O-Ring ø83.8x2.62	1				
25	1982740	Pump head - EZ Start	1	64	1981420	Flange F7	1				
26	1260162	Valve cap	(443 in/lbs) 3	64	1982940	Flange anodized	1				
27	960160	O-Ring ø17.86x2.62	3	65	1982360	Rear bearing	1				
28	1269050	Valve assembly	3	66	SHAFT OIL SEAL SEE NOTE ON RIGHT		1				
29	1982520	Hose tail	1	67	1980430	Spacer	3				
30	480480	O-Ring ø4.48x1.78	1	77	1981130	Plunger shoe	3				
31	1250280	Ball	1	78	1981770	Knob plug	1				
32	1560520	Spring	1	79	1982560	Screw TE M6x8 - EZ Start	1				
33	1460430	O-Ring ø4x2.5	1	80	1982570	Washer Ø16.3 - EZ Start	1				
34	1540170	Check valve	1	81	1982440	Crub screw M8x8 - EZ Start	1				
35	1080091	Spring	1	82	1982240	Ball - EZ Start	1				

Special Parts / Kits

Code	Description	Qty.
1989240	Complete Manifold with EZ Start	1

Legend

For ●	For ■	For ▲
SJV2G25	SJV2.5G24	SJV3G25
	SJV2.5G25	SJV3G27
	SJV2.5G26	
	SJV2.5G27	

66 SHAFT OIL SEAL

OLD VERSION: AR480671 Measures 40mm x 52mm x 7mm
Included in kit AR2797

NEW VERSION: AR1140380 Measures 30mm x 42mm x 7mm
Included in kit AR2591