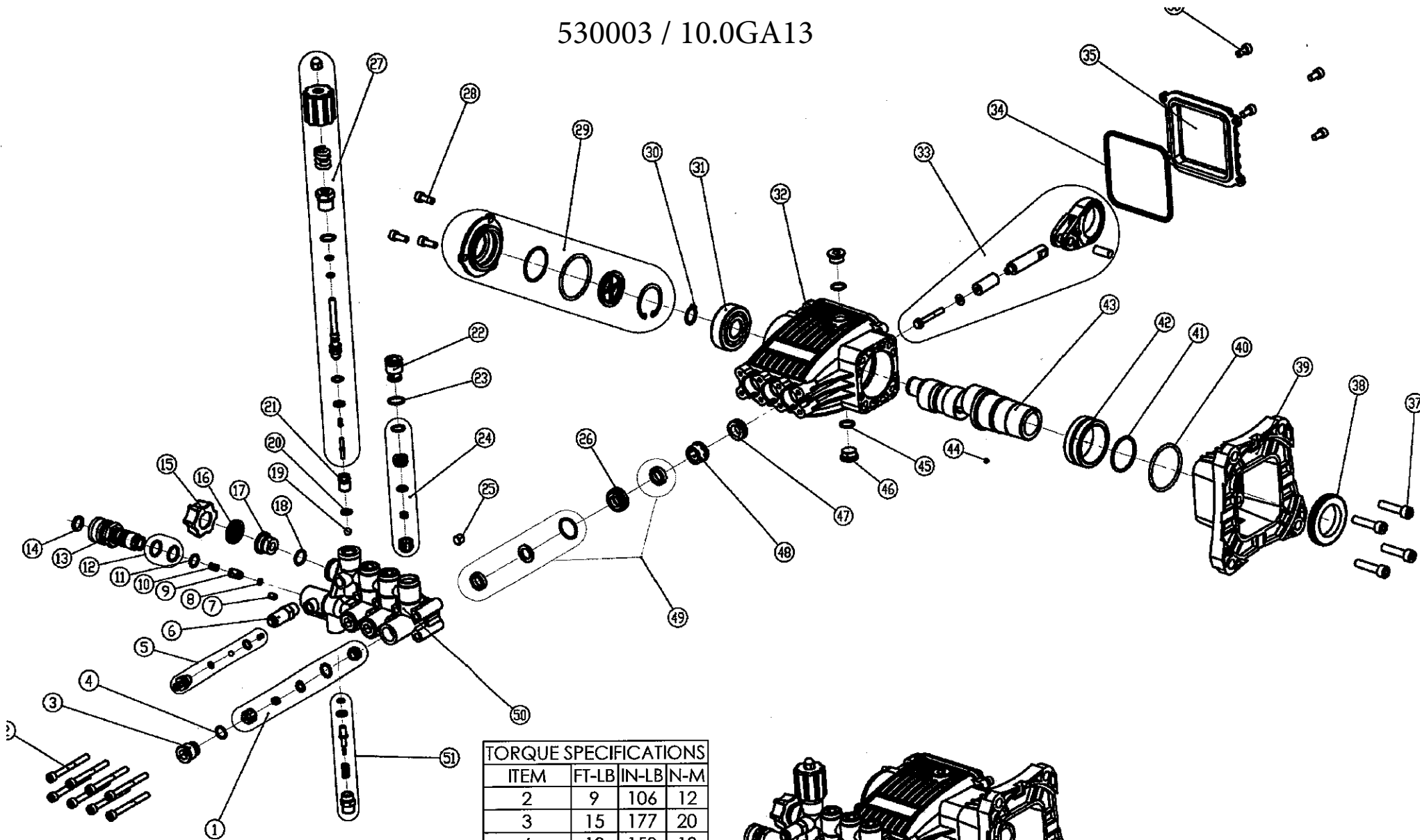
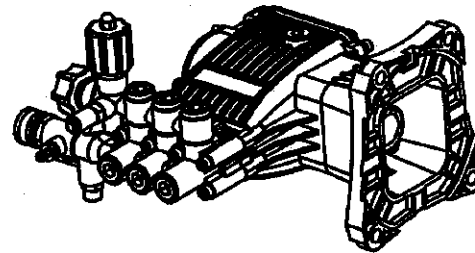


530003 / 10.0GA13



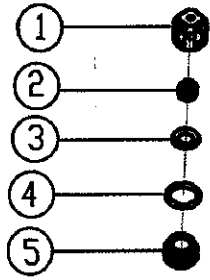
TORQUE SPECIFICATIONS			
ITEM	FT-LB	IN-LB	N-M
2	9	106	12
3	15	177	20
6	13	159	18
13	15	177	20
17	15	177	20
22	15	177	20
27	15	177	20
28	7	80	9
36	7	80	9
37	18	221	25
44	3	35	4
46	13	159	18
51	13	159	18



**FNA-GROUP**  
 1265 INDUSTRIAL STREET, DECATUR, AR 72722

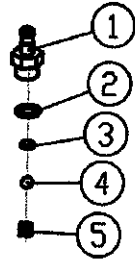
TITLE:  
**AAA C40 SERIES PUMP**  
 3800PSI @ 3.5GPM  
 HORIZONTAL TRIPLEX

SIZE **A** DWG. NO. **530003** REV **C**



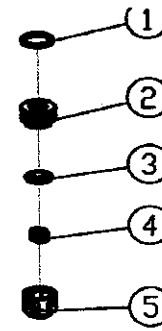
① **PART NO. 7106691**

OUTLET VALVE KIT		
ITEM	QTY	DESCRIPTION
1	3	VALVE, CAGE
2	3	VALVE, SPRING
3	3	VALVE, DISK
4	3	VALVE, O-RING
5	3	VALVE, SEAT



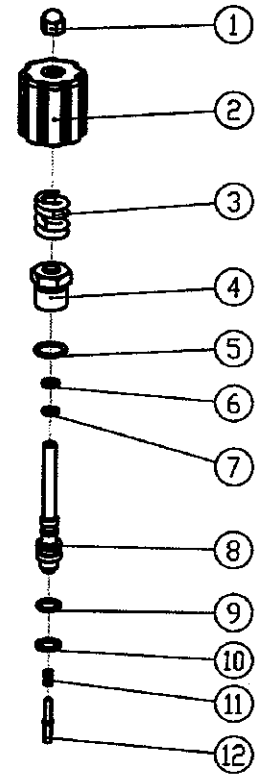
⑤ **PART NO. 7104228**

SOAP INJECTOR KIT		
ITEM	QTY	DESCRIPTION
1	1	HOSE BARB
2	1	O-RING
3	1	BALL, SOAP VALVE
4	1	SPRING, SOAP VALVE



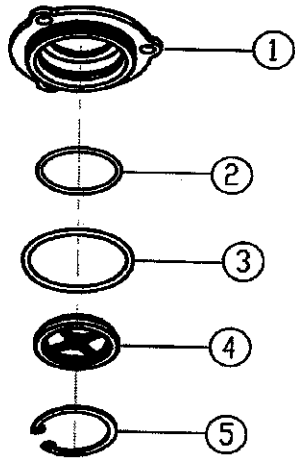
②④ **PART NO. 7106708**

INLET VALVE KIT		
ITEM	QTY	DESCRIPTION
1	3	O-RING
2	3	VALVE, SEAT
3	3	VALVE, DISK
4	3	VALVE, SPRING
5	3	VALVE, CAGE



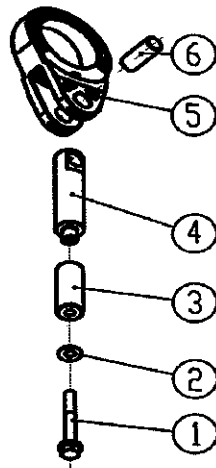
②⑦ **PART NO. 7106711**

UNLOADER KIT		
ITEM	QTY	DESCRIPTION
1	1	NUT, UNLOADER JAM
2	1	NUT, UNLOADER ADJUSTMENT
3	1	SPRING, UNLOADER
4	1	CORE, UNLOADER VALVE
5	1	O-RING
6	1	RING, BACK-UP RING, SPLIT
7	1	O-RING
8	1	POLE, UNLOADER VALVE
9	1	O-RING
10	1	RING, BACK-UP RING, SPLIT
11	1	PIN, SPRING
12	1	PIN, UNLOADER



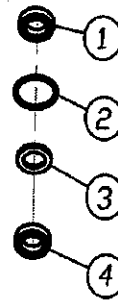
②⑨ **PART NO. 7106709**

CRANKCASE SIDE COVER KIT		
ITEM	QTY	DESCRIPTION
1	1	COVER, SIDE
2	1	O-RING
3	1	O-RING
4	1	SIGHT GLASS
5	1	RING, RETAINING



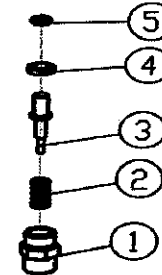
③③ **PART NO. 7106718**

CONNECTING ROD KIT		
ITEM	QTY	DESCRIPTION
1	3	BOLT
2	3	GASKET
3	3	PLUNGER, CERAMIC
4	3	BASE, PLUNGER POLE
5	3	ROD, CONNECTING
6	3	PIN, CONNECTING ROD



④⑨ **PART NO. 7106733**

HIGH AND LOW PRESSURE SEAL		
ITEM	QTY	DESCRIPTION
1	3	SEAL, LOW PRESSURE
2	3	O-RING
3	3	RING, ANTI-EXT
4	3	SEAL, HIGH PRESSURE



⑤① **PART NO. 7106628**

PRESSURE BOOST VALVE KIT		
ITEM	QTY	DESCRIPTION
1	1	VALVE, CAP
2	1	VALVE, SPRING
3	1	VALVE
4	1	VALVE, BACK RING
5	1	VALVE, O-RING

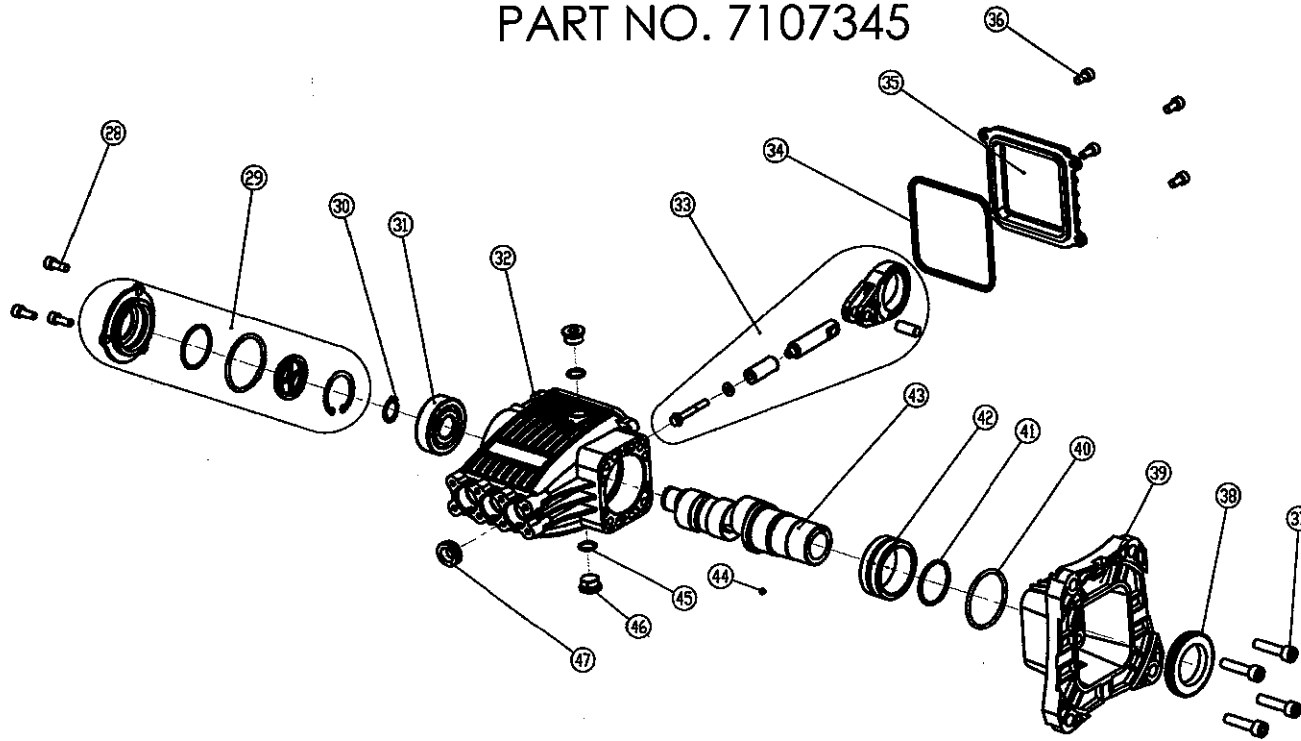
## 530003 PUMP DRAWING PARTS

ITEM	PART NO.	DESCRIPTION	QTY	COMMENT
1	7106691	Cage, Valve	3	Outlet Valve Kit
		Spring, Valve		
		Disk, Valve		
		O-Ring		
		Seat, Valve		
2	7106692	Screw	8	
3	7106693	Plug	3	
4	7106694	O-Ring	3	
5	7104228	Hose Barb	1	Soap Injector Kit
		O-Ring		
		Ball, Soap Valve		
		O-Ring		
6	7101359	Valve, Thermal Relief	1	
7	7106695	Screw	1	
8	7106696	O-ring, Check Valve	1	
9	7106697	Core, Check Valve	1	
10	7106698	Spring, Check Valve	1	
11	7106699	O-Ring	1	
12	7106700	O-Ring	2	
13	7106701	Quick Connect Connector, Outlet	1	
14	7106702	O-Ring	1	
15	7105705	Nut, Hand Tight	1	
16	7000123	Screen, Water Inlet	1	
17	7106703	Inlet Connector	1	
18	7106704	O-Ring	1	
19	7105710	Ball	1	
20	7106705	O-Ring	2	
21	7106706	Unloader Valve Base	1	
22	7106707	Plug	3	
23	7106700	O-Ring	3	
24	7106708	O-Ring	3	Inlet Valve Kit
		Seat, Valve		
		Disk, Valve		
		Spring, Valve		
		Cage, Valve		
25	7106647	Plug	1	
26	7106710	Retainer	3	
27	7106711	Nut, Unloader Jam	1	Unloader Kit
		Nut, Unlader Adjustment		
		Spring, Unloader		
		Core, Unloader Valve		
		O-Ring		
		Back-Up Ring, Split		
		O-Ring		
		Pole, Unlader Valve		
		O-Ring		
		Back-Up Ring, Split		
		Spring, Pin		
Pin				

## 530003 PUMP DRAWING PARTS

ITEM	PART NO.	DESCRIPTION	QTY	COMMENT
28	7106721	Screw	3	
29	7106709	Cover, Side	1	Crankcase Side Cover Kit
		O-Ring		
		O-Ring		
		Sight Glass		
		Ring ø40, Retaining		
30	7106714	Ring ø20, Retaining	1	
31	7106715	Bearing, 6304	1	
32	7106716	Crankcase	1	
33	7106718	Bolt	3	Connecting Rod Kit
		Gasket		
		Piston, Ceramic		
		Plunger, Pole, Base		
		Connecting Rod		
34	7106719	O-Ring	1	
35	7106720	End Cover	1	
36	7106721	Screw	4	
37	7106722	Screw	4	
38	7106723	Oil Seal	1	
39	7106724	Flange	1	
40	7106712	O-Ring	1	
41	7106726	Ring ø40, Retaining	1	
42	7106727	Needle Bearing	1	
43	7106672	Crankshaft, ø10	1	
44	7106729	Screw	1	
45	7106730	O-Ring	2	
46	7105721	Plug	2	
47	7106731	Oil Seal	3	
48	7106732	Retainer, Seal	3	
49	7106733	Seal, Low Pressure	3	High and Low Pressure Seal Kit
		O-Ring		
		Ring, Anti-Ext		
50	7106734	Seal, High Pressure	1	
51	7106628	Pump Head	1	Pressure Boost Valve Kit
		Valve Cap, Pressure Boost		
		Spring, Boost Valve		
		Valve, Pressure Boost		
		Back Ring		
O-Ring				

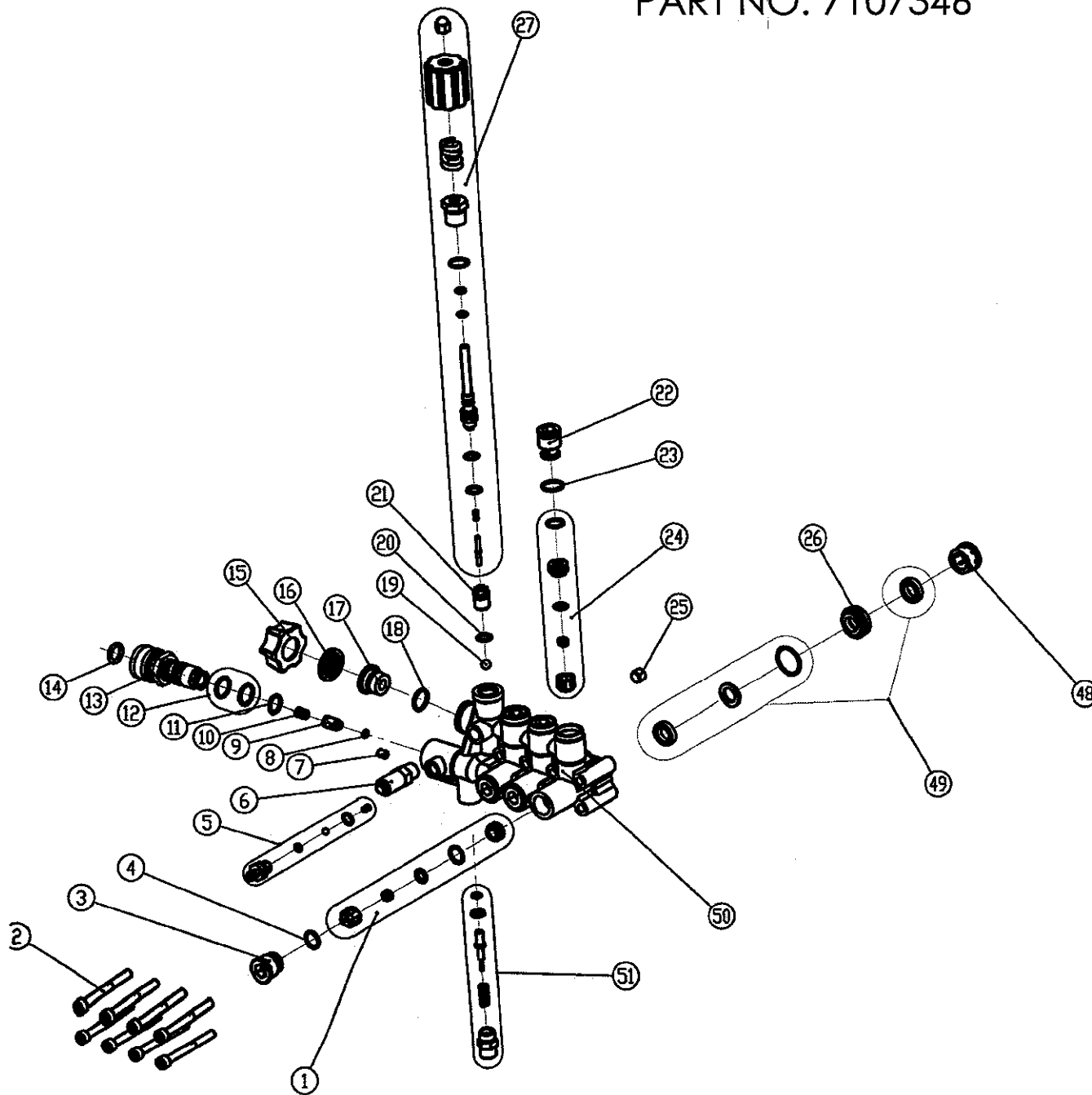
# PUMP KIT, 530003 CRANKCASE PART NO. 7107345



## 530003 PUMP DRAWING PARTS

ITEM	PART NO.	DESCRIPTION	QTY	COMMENT
28	7106721	Screw	3	
29	7106709	Cover, Side	1	Crankcase Side Cover Kit
		O-Ring		
		O-Ring		
		Sight Glass		
		Ring ø40, Retaining		
30	7106714	Ring ø20, Retaining	1	
31	7106715	Bearing, 6304	1	
32	7106716	Crankcase	1	
33	7106718	Bolt	3	Connecting Rod Kit
		Gasket		
		Piston, Ceramic		
		Plunger, Pole, Base		
		Connecting Rod		
		Pin, Connecting Rod		
34	7106719	O-Ring	1	
35	7106720	End Cover	1	
36	7106721	Screw	4	
37	7106722	Screw	4	
38	7106723	Oil Seal	1	
39	7106724	Flange	1	
40	7106712	O-Ring	1	
41	7106726	Ring ø40, Retaining	1	
42	7106727	Needle Bearing	1	
43	7106672	Crankshaft, ø10	1	
44	7106729	Screw	1	
45	7106730	O-Ring	2	
46	7105721	Plug	2	
47	7106731	Oil Seal	3	

# PUMP KIT, 530003 MANIFOLD PART NO. 7107346



## 530003 PUMP DRAWING PARTS

ITEM	PART NO.	DESCRIPTION	QTY	COMMENT
1	7106691	Cage, Valve	3	Outlet Valve Kit
		Spring, Valve		
		Disk, Valve		
		O-Ring		
		Seat, Valve		
2	7106692	Screw	8	
3	7106693	Plug	3	
4	7106694	O-Ring	3	
5	7104228	Hose Barb	1	Soap Injector Kit
		O-Ring		
		Ball, Soap Valve		
		O-Ring		
		Spring, Soap Valve		
6	7101359	Valve, Thermal Relief	1	
7	7106695	Screw	1	
8	7106696	O-ring, Check Valve	1	
9	7106697	Core, Check Valve	1	
10	7106698	Spring, Check Valve	1	
11	7106699	O-Ring	1	
12	7106700	O-Ring	2	
13	7106701	Quick Connect Connector, Outlet	1	
14	7106702	O-Ring	1	
15	7106705	Nut, Hand Tight	1	
16	7000123	Screen, Water Inlet	1	
17	7106703	Inlet Connector	1	
18	7106704	O-Ring	1	
19	7105710	Ball	1	
20	7106705	O-Ring	2	
21	7106706	Unloader Valve Base	1	
22	7106707	Plug	3	
23	7106700	O-Ring	3	
24	7106708	O-Ring	3	Inlet Valve Kit
		Seat, Valve		
		Disk, Valve		
		Spring, Valve		
		Cage, Valve		
25	7106647	Plug	1	
26	7106710	Retainer	3	
27	7106711	Nut, Unloader Jam	1	Unloader Kit
		Nut, Unlader Adjustment		
		Spring, Unloader		
		Core, Unloader Valve		
		O-Ring		
		Back-Up Ring, Split		
		O-Ring		
		Pole, Unlader Valve		
		O-Ring		
		Back-Up Ring, Split		
		Spring, Pin		
Pin				
48	7106732	Retainer, Seal	3	
49	7106733	Seal, Low Pressure	3	High and Low Pressure Seal Kit
		O-Ring		
		Ring, Anti-Ext		
50	7106734	Seal, High Pressure	1	Pressure Boost Valve Kit
		Pump Head		
51	7106628	Valve Cap, Pressure Boost	1	Pressure Boost Valve Kit
		Spring, Boost Valve		
		Valve, Pressure Boost		
		Back Ring		
		O-Ring		